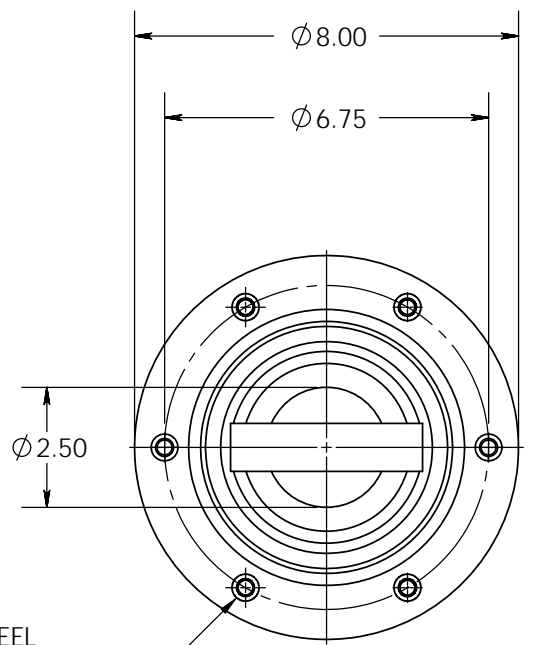
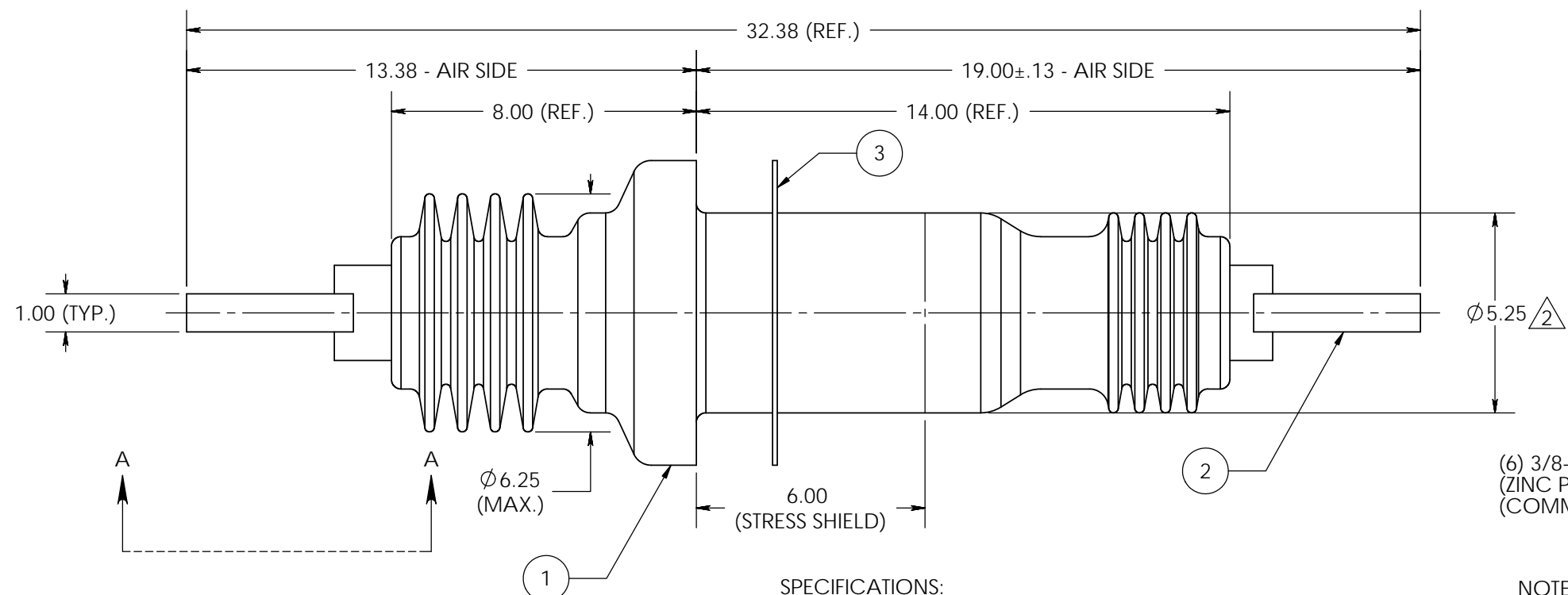
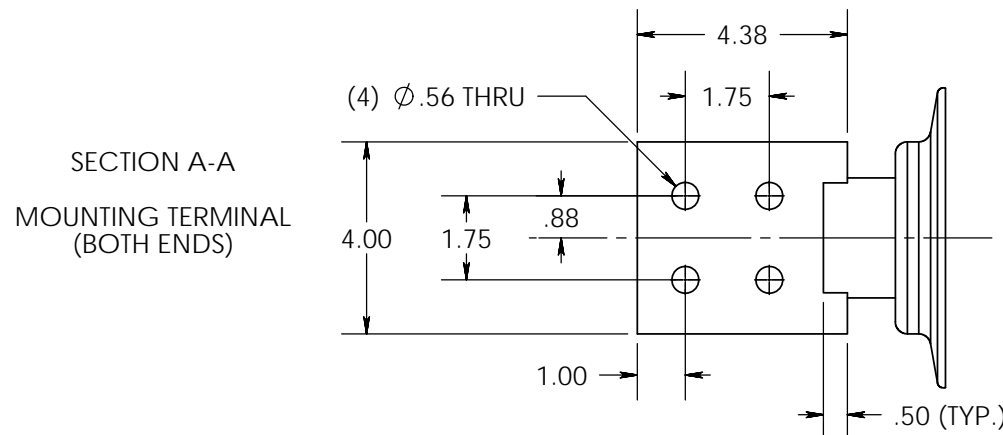
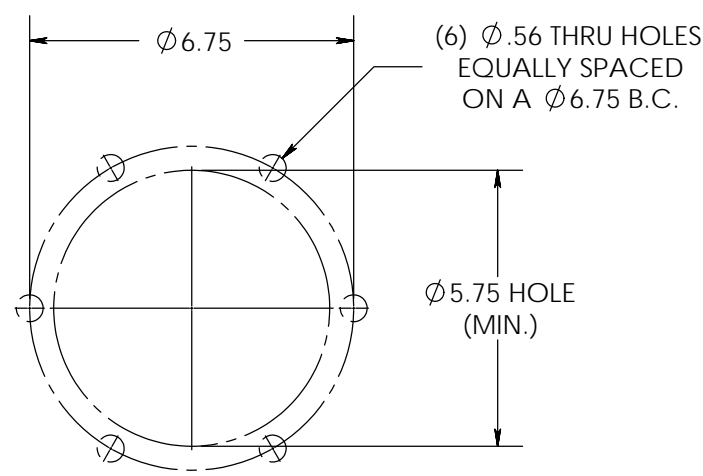


ITEM NO.	PART NUMBER	DESCRIPTION	QTY.
1	20-200-9	BUSHING, EPOXY	1
2	SS-0169-02	CONDUCTOR, 3000A, 4HL SPADE BOTH ENDS	1
3	GA-0104-00	NITRILE BUNA N DUROMETER 60+/-5	1

REVISIONS					
REV.	DATE	ECN#	DESCRIPTION	BY	APPROVED
1	5/21/2009		UPDATED TO HJI TEMPLATE, ADDED GASKET		DB
2	6/23/2014	HJ14-108	REMOVED MAXIMUM CONDITION	CLS	BLB

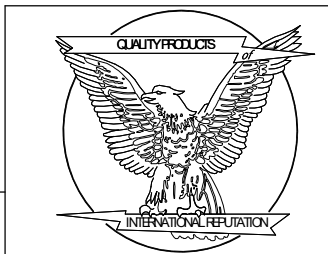


(6) 3/8-16 UNC X .63 DP. STEEL (ZINC PLATED) MOUNTING INSERTS (COMMON WITH STRESS SHIELD)



- SPECIFICATIONS:
1. MANUFACTURED IN ACCORDANCE WITH ..... IEEE C57.19.01 - 2000
  2. RATED VOLTAGE ..... 15kV
  3. POWER FREQUENCY WITHSTAND ..... 50kV
  4. BASIC IMPULSE LEVEL ..... 110kV
  5. NOMINAL CURRENT RATING ..... 3000 AMPS
  6. TEMPERATURE CLASSIFICATION ..... -40°C TO +105°C
  7. APPROXIMATE WEIGHT ..... 75 LBS

- NOTES:
1. ALL CONTACT SURFACES TO BE CLEAN & FREE FROM FLASH
- MATERIAL:
1. E07 - CYCLOALIPHATIC EPOXY (U.V. EXPOSED), COLOR: GREY
  2. HD ETP COPPER C11000, TIN PLATED - CONDUCTOR



**H-J INTERNATIONAL, INC.**  
 3010 HIGH RIDGE BLVD, HIGH RIDGE, MO. 63049 USA  
 PHONE 1-636-677-3421 FAX 1-636-376-1915

15kV / 3000A  
 POWER APPARATUS BUSHING

**PROPRIETARY AND CONFIDENTIAL**  
 THE INFORMATION CONTAINED IN THIS DRAWING IS THE SOLE PROPERTY OF H-J INTERNATIONAL, INC. ANY REPRODUCTION IN PART OR AS A WHOLE WITHOUT THE WRITTEN PERMISSION OF H-J INTERNATIONAL, INC. IS STRICTLY PROHIBITED.

TOLERANCES (EXCEPT AS NOTED)	
ONE PLACE MM	±1.50
TWO PLACE MM	±0.75
TWO PLACE DEC.	±.060
THREE PLACE DEC.	±.030
FRACTIONS	± 1/16"
ANGLES	2°

APPROVED BY	DB	DATE	3/29/2005
CHECKED BY	BS	DATE	06/23/2014
DRAWN BY	DB	DATE	3/28/2005
TOOL NO.	T20-200-9		
PRODUCT GRP.	2000 SERIES		

DRAWING NO. <b>20-200-902</b>			
SCALE	1:4	SIZE	B
REV.	2	SHEET	1 OF 1

RECOMMENDED MOUNTING DETAIL

BREAK ALL SHARPS UNLESS OTHERWISE NOTED